



Superior Guest Experience – Made Easy.

---

# Testing & Tagging Legislation

What your business needs to know.



## TEST & TAG FOR HOTELS AND MOTELS

At Kadec Test and Tag, we specialise in servicing Hotels and Motels.

While they appear to be a lower risk workplace, they are in fact a more hostile environment to some electrical appliances than a typical office. Not only are they a workplace, but guests also use the appliances and in our experiences can treat your assets with disregard. Employee as well as guest safety is a major factor in assessing your accommodation workplace safety management systems.

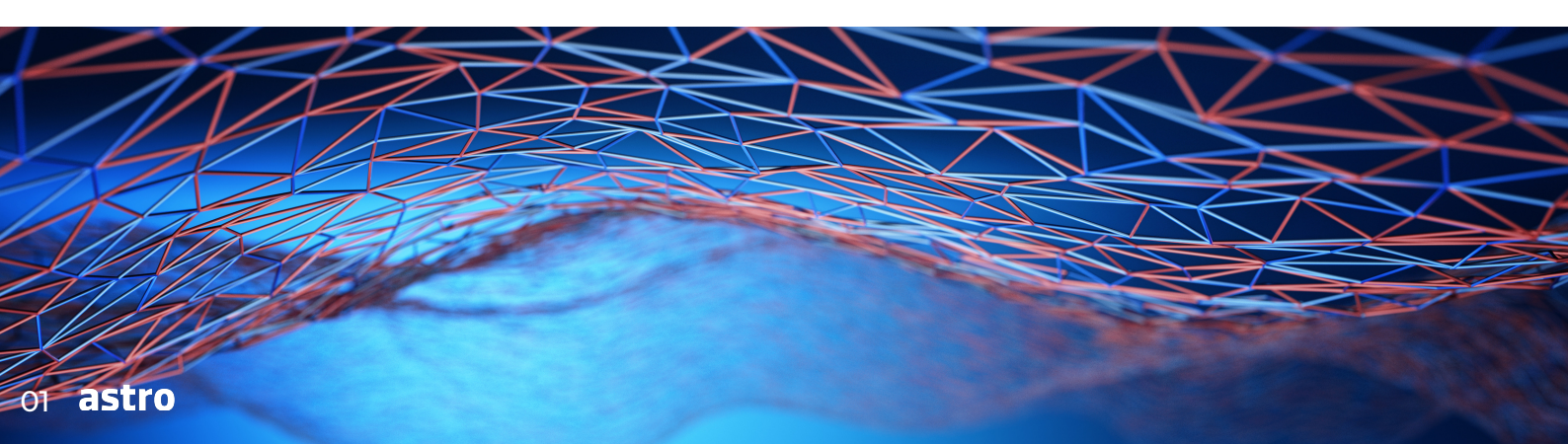
Accommodation places are a lower risk than the construction industry or factories and warehouses, however hotels and motels still have an element of workplace risk for electrical appliances requiring that all appliances are to be tested on a regular basis.

Legislation around the requirements of testing are a combination of regulation and standards.

If you ask any Motel / Hotelier, they will agree that many appliances are replaced regularly due to the damage or wear of electrical cords. There is a surprisingly high rate of appliances in the rooms that fail testing.

In general, the testing Standard NZS3760 says testing for accommodation houses to be every 24 months, however there are other appliances within the accommodation industry that require more frequent testing. For example, commercial cleaning equipment require regular 6 month testing and office equipment including computers require 12 month testing.

Due to their environment, Kadec Test & Tag recommends the testing of some appliances like toasters, kettles, lamps and clothes irons to be tested as a minimum of every 12 months. However this is only a suggestion for the purpose of safety of your clients and a professional image for your business, it is not a legal requirement.





## Regulations, Legislation & Standards

While New Zealand and Australia share the Standards AS/NZS3760 and AS/NZS3012 as being the basis for how to test and tag, there are differences in the legislation.

In New Zealand testing time frames for retesting and inspecting equipment can be found in Table 4 of NZS3760.

Although the NZS3760 standard sets out how Test and Tag is to be done, it is a combination of the Electricity (Safety) Regulations 2010

- Clause 15 - Using works, installations, fittings, appliances, and associated equipment
- Clause 26 - When fittings and appliances in use deemed to be electrically safe

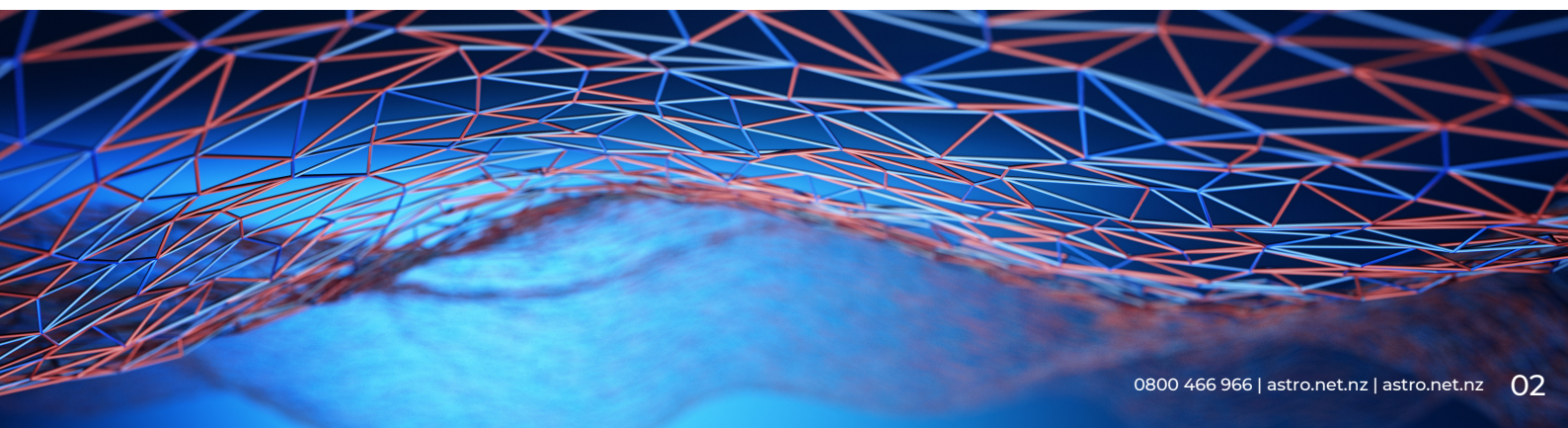
and the Health and Safety at Work Act (Clause 36) that determines that all businesses should utilise a Test and Tag regime.



## Business Compliance Tool is now available

A fantastic new tool has been developed by the government to help you determine what you need to do to comply with the new Health & Safety at Work regulations Act 2015.

Let Kadec Test & Tag take some of that worry away for you by testing your electrical appliances and ensure they meet NZS3760 Standards, which is recognised as meeting the requirements of a practicable step you can take in your workplace.





---

## **ABOUT THE STANDARD AS/NZS3760**

(Current version 2010)

This Standard started life back in 1990 as AS3760 and was revised and adopted by New Zealand in 1996 becoming AS/NZS3760. It was again reviewed and a 2000 edition was published. In 2001 a further edition was published which had a number of significant changes and has since undergone considerable work continuing to mature into the 2003 version. This version included the ability to have customised solutions based on Risk Assessment, the 'Responsible Person' was defined, qualifications of a 'Competent Person' clarified and the environments for frequency of inspection and testing revised to be more usage based, rather than specific site based.

In 2010 the latest version, which was a complete revision, was released. Changes in this included revised testing periods in Table 4, new tag requirements to show referencing to AS/NZS3760/3551 and retest time/date.

NOTE: There are some parts of the Standard AS/NZS3760 which apply to just one country - these differences are highlighted within the Standard.

Other Standards such as AS/NZS3012, AS/NZS5761 and AS/NZ5762 etc are also appropriate. It is however AS/NZS3760 which has the greatest general knowledge on testing.

[Click here to visit the  
Kadec Test & Tag Website](#)

[Click here to download the  
Electrical \(Safety\) Regulations 2010 PDF](#)



### The FOREWORD of this Standard says

'In-service testing is a necessary part of any safety program to help ensure the safety of persons using electrical equipment in the workplace. This Standard specifies in-service safety inspection and testing protocols and criteria that satisfy these obligations, and provides a cost-effective approach to safety without jeopardising personnel safety or involving excessive equipment downtime.'



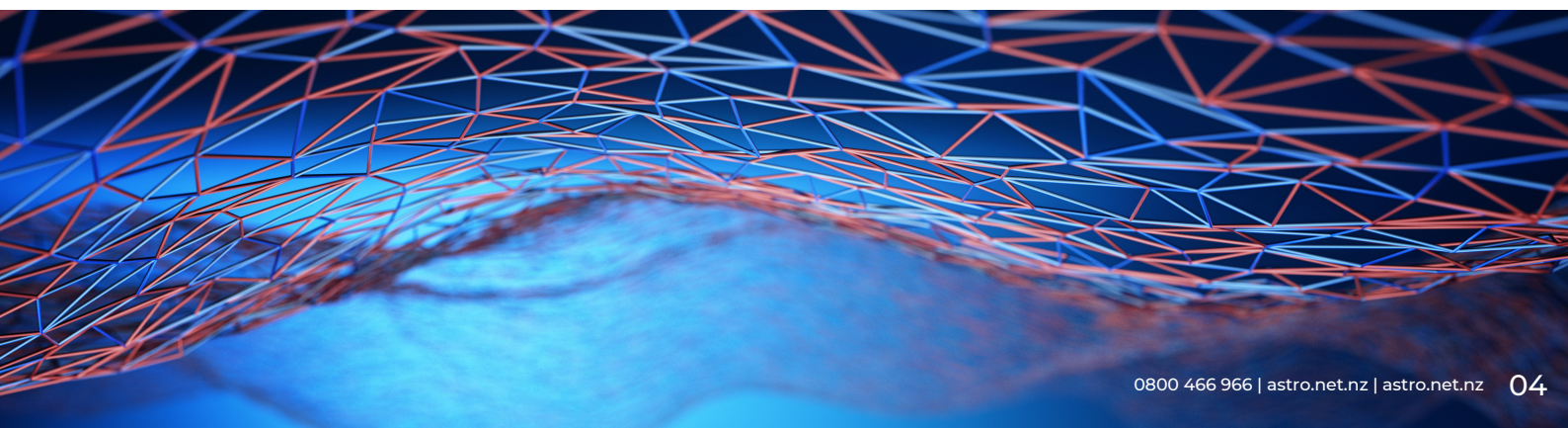
### The OUTCOME STATEMENT says

AS/NZS3760 will enable persons responsible for the safety of electrical equipment in the workplace to instigate an inspection and testing programme to achieve that aim. It also enables persons undertaking the inspection and testing to carry out the task in a safe and effective manner.'



### What Worksafe NZ says about Testing & Tagging

It was suggested by a senior OSH/Workplace Inspector that whilst testing is not mandatory, maintaining safety is, and unless you have complied with AS/NZS3760 as a minimum then OHS/DOL/WorkCover would not consider you have 'taken all reasonable steps' and would likely use non-compliance with AS/NZS3760 as the basis for prosecution should the need arise.



# astro

HOSPITALITY

---

[astro.net.nz](http://astro.net.nz) | 0800 466 966 | [hello@astro.net.nz](mailto:hello@astro.net.nz)

